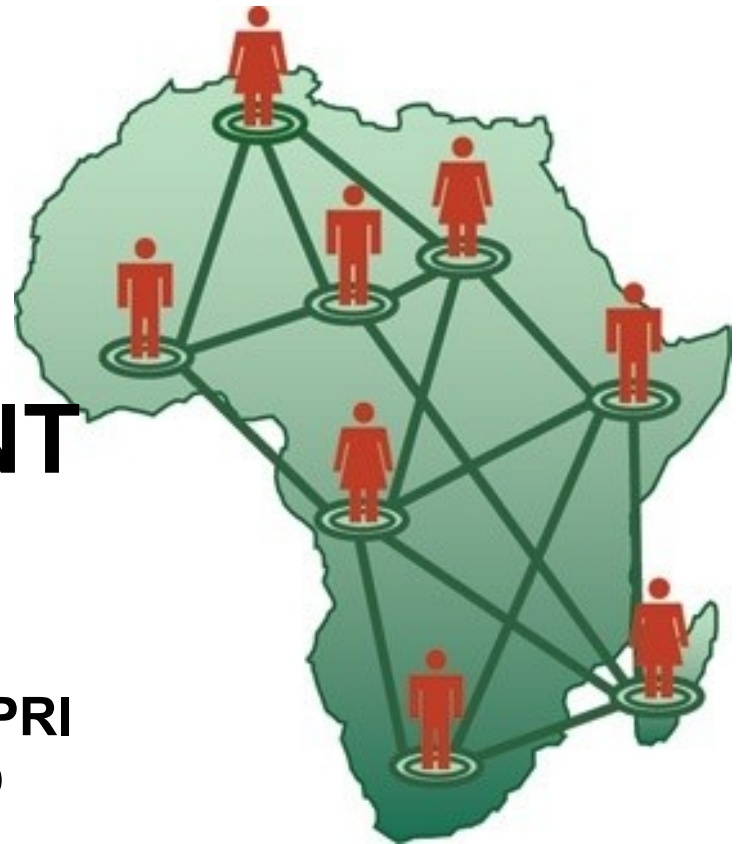


AGRODEP DATA COMPONENT



**BETINA DIMARANAN, IFPRI
HUBERT ESCAITH, WTO
ISMAEL FOFANA, IFPRI
TERRIE WALMSLEY, GTAP**

**Inception Workshop of the African Growth and Development
Policy (AGRODEP) Modeling Consortium
October 28-29, 2010 · Dakar, Senegal**

DATA COMPONENT: CONTEXT

- Lack of good quality data to support research and policy analysis
 - Weak capacity at statistical office
 - Inadequate data collection and management
 - Outdated computer systems
- Several recent data initiatives, examples:
 - International Household Survey Network (World Bank)
 - launched 2004, survey data in developing countries
 - African Symposium on Statistical Development
 - convened 2006, collection\dissemination of census data
 - African Charter on Statistics (adopted 2009)
 - adopted 2009, coordination of statistical activities
 - Living Standards Measurement Study-Integrated Surveys on Agriculture , LSMS-ISA (BMGF, World Bank)

DATA COMPONENT: MAIN GOALS

AGRODEP will develop a central data clearinghouse with a Web data portal

Main Goals:

- To bring together dispersed and disparate statistical, economic, and geospatial data in Africa;
- To provide links to existing key data sources;
- To develop shared standards, formats, and exchange protocols;
- To train AGRODEP members on database construction to ensure future developments;

DATA COMPONENT: CROSS-CUTTING ACTIVITIES

- Priority setting in data collection efforts
- Data stocktaking – identification of available data and sources
- Development of data standards and protocols on data acquisition, archiving, metadata, quality control, dissemination
- Contact data sources \ negotiate access
- Identification of data experts\collaborators

DATA COMPONENT: DATA PROJECTS

- Prioritization \ Collaborate with model and network component
- Develop datasets for specific models, e.g.:
 - multi-market models – hhld survey data, prices, params
 - gravity models – trade, transport costs, distance, etc,
 - CGE models – I-O, SAMs, parameters
- Development of data methodology, e.g.
 - harmonization of agric surveys & SAMs
- Bring I-O tables into global CGE database

DATA COMPONENT: NEXT PRESENTATIONS

- Social Accounting Matrices and challenges for Africa - **Ismael Fofana**
- GTAP Database for global CGE and data gaps in Africa – **Terrie Walmsley**
- WTO Trade and Tariffs data and data gaps in Africa – **Hubert Escaith**



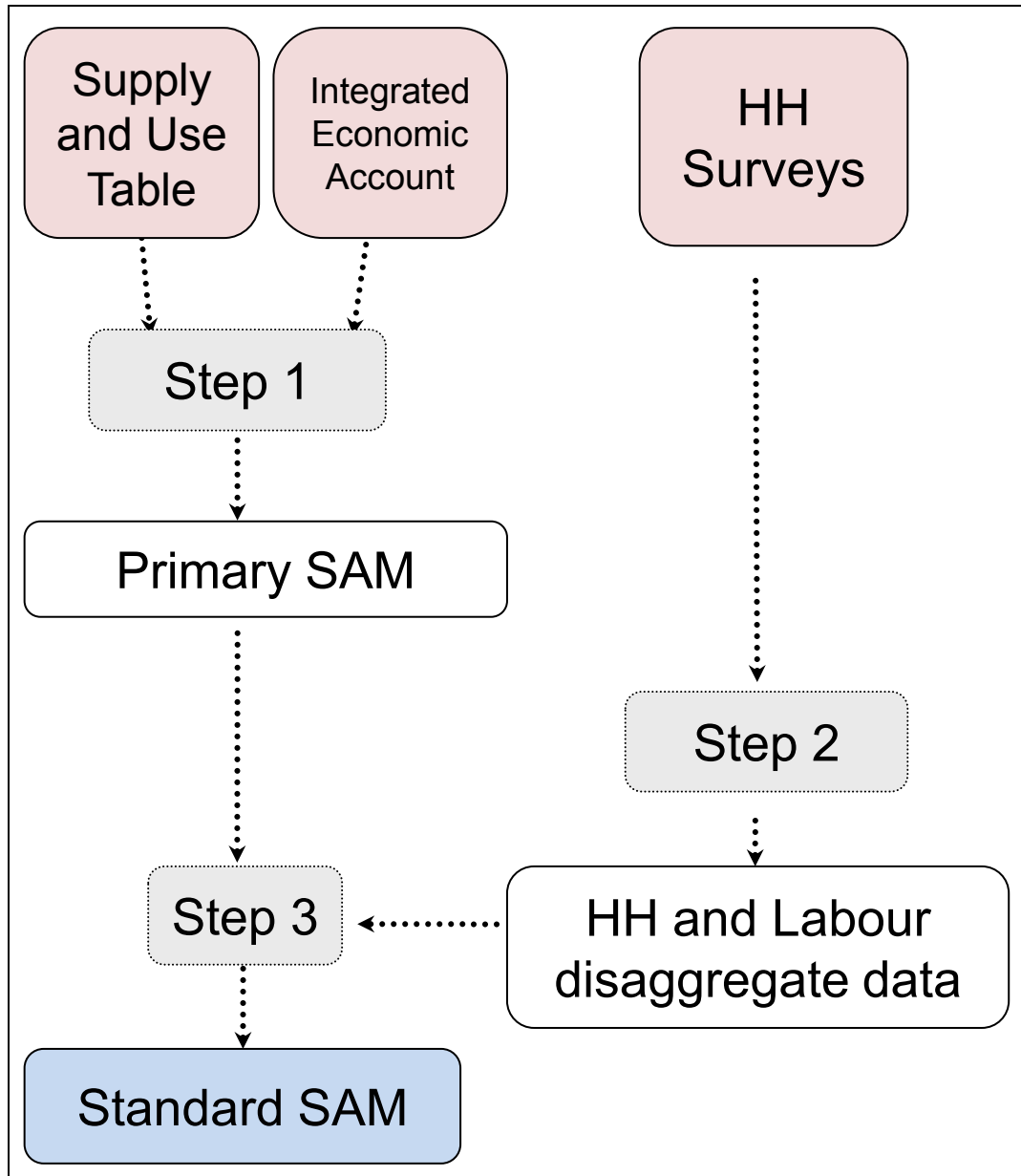
SOCIAL ACCOUNTING MATRICES AND CHALLENGES FOR AFRICA

Ismael Fofana, IFPRI

SAM DEFINITION AND STANDARD STRUCTURE

“The presentation of SNA accounts in a matrix which elaborates the linkages between Supply and Use tables and institutional sector accounts” (SNA, 1993)

	Factors	Institutional Sectors	Activities	Commodities	Savings/ Investment
Factors			Compensation for employees, GOS and mixed income (SU-tables)		
Institutional Sectors	Compensation for employees, GOS and mixed income (SU-tables)	Inter-institutional transfers (IEA)	Tax receipts on production (SU-tables)	Imports, Duty and other tax on products (SU-tables)	
Activities				Production at basic prices (SU-tables)	
Commodities		Final consumption and exports, at purchasing prices (SU-tables)	Intermediate consumption at purchasing prices (SU-tables)		fixed capital formation and changes in stocks at purchasing prices (SU-tables)
Savings/ Investment		Savings (IEA)			



STEPS IN DEVELOPING A STANDARD SAM

SUT: presentation of the national accounts in term of origin and destination of goods and services

IEA: synthesis of the economic transactions of the institutional sectors

SAMs IN IFPRI

Country	Year
Ghana	2005
Kenya	2001; 2003
Malawi	1998
Mozambique	1994/95
Nigeria	2006
South Africa	1993 (updated to 98-99;2000)
Tanzania	1992
Uganda	1999
Zambia	1995; 2001
Zimbabwe	1991

CHALLENGES FOR AFRICAN COUNTRIES

- Availability of more recent IO tables
 - Nigeria: IO table 1989 (SAM 2006)
 - Guinea: IO table 1998 (SAM 2005)
- Production of IO tables <10 years

Primary data source	Production time
SUT (except IO table)	< 5 years
IO table	>10 years
IEA/National Account	< 5 years
HH Surveys	5 years

CHALLENGES FOR AFRICAN COUNTRIES

- Availability of more recent IO tables
 - Nigeria: IO table 1989 (SAM 2006)
 - Guinea: IO table 1998 (SAM 2005)
- Production of IO tables <10 years

Primary data source	Production time
SUT (except IO table)	< 5 years
IO table	>10 years
IEA/National Account	< 5 years
HH Surveys	5 years



THE GTAP DATABASE (FOR GLOBAL CGE MODELING)

Terrie Walmsley

GTAP 7.1 DATA BASE

- 2004
- 112 regions and 57 commodities
- New
 - Services Trade
 - Updated Energy
 - Income taxes
 - New regions: Armenia, Azerbaijan, Belarus, Bolivia, Cambodia, Costa Rica, Ecuador, Egypt, Ethiopia, Georgia, Guatemala, Iran, Kazakhstan, Kyrgyzstan, Laos, Mauritius, Nicaragua, Nigeria, Norway, Pakistan, Panama, Paraguay, Senegal and Ukraine
 - Updated: 27 EU countries, Australia, China, Korea, Indonesia, Philippines, Vietnam, India, Sri Lanka, Canada, USA, Mexico, Chile, Colombia, Peru, Uruguay, Morocco, South Africa.

GTAP 8 DATA BASE

- Two base years 2004 and 2007
- Updates expected:
 - Protection
 - Goods and Services Trade
 - Energy
 - 5 skill types
 - Improved International margins
 - Commodity taxes

COVERAGE OF AFRICA

MAR	Morocco	2004
EGY	Egypt	2003
TUN	Tunisia	1995
BWA	Botswana	1994
ZAF	South Africa	2005
XSC	Rest of South African Customs Union	
MWI	Malawi	1994
MUS	Mauritius	1997
MOZ	Mozambique	1995
TZA	Tanzania	1992
ZMB	Zambia	1995
ZWE	Zimbabwe	1991
COD	Congo, Dem. Rep of	1987
XSD	Rest of Southern African Development Community	

Black: Africa Data Base

Red: Chopping Bloc

COVERAGE OF AFRICA

MDG	Madagascar	1999
NGA	Nigeria	1999
SEN	Senegal	1996
UGA	Uganda	1992
CIV	Cote d'Ivoire	1998
XWA	Rest of WAEMU	
GHA	Ghana	2005
XEW	Rest of ECOWAS	
CMR	Cameroon	2003
XCA	Rest of CAEMC	
KEN	Kenya	2001
ETH	Ethiopia	2002
XCS	Rest of COMESA	
SDN	Sudan	2004
XSS	Rest of Sub-Saharan Africa	

Black: Africa Data Base

Red: Chopping Bloc

OTHER DATA AND SATELLITE DATA

- Trade
- Protection
- Water
- CO₂ and non-CO₂ Emissions
- Migration
- Land Use
- FDI
- Energy Volumes



WTO TRADE AND TARIFFS DATA AND DATA GAPS IN AFRICA

Hubert Escaith

World Trade Organization: African trade and tariff profiles



INTERNATIONAL TRADE AND TARIFF DATA

Where to find WTO trade and tariff statistics?

http://www.wto.org/english/res_e/statistics_e/looking4_e.htm#summary

Summary table [back to top](#)

Available resources	Database	Tables (Excel format)	Publications (PDF format)
What are you looking for ?...			
Trade and tariff information by economy	<input checked="" type="checkbox"/>		
Tariff profiles	<input checked="" type="checkbox"/>		<input checked="" type="checkbox"/>
Trade profiles	<input checked="" type="checkbox"/>		<input checked="" type="checkbox"/>
Services profiles	<input checked="" type="checkbox"/>		
Merchandise trade statistics			
Short-term merchandise trade (quarterly and monthly data)		<input checked="" type="checkbox"/>	
Total merchandise trade values	<input checked="" type="checkbox"/>		
Total merchandise trade indices	<input checked="" type="checkbox"/>		
Merchandise trade by commodity	<input checked="" type="checkbox"/>	<input checked="" type="checkbox"/>	
World merchandise exports by main product, origin and destination	<input checked="" type="checkbox"/>		
Trade of selected regional integration arrangements	<input checked="" type="checkbox"/>		
World and regional export profiles 2009			<input checked="" type="checkbox"/>
World commodity profiles for 2009			<input checked="" type="checkbox"/>
Trade in commercial services	<input checked="" type="checkbox"/>	<input checked="" type="checkbox"/>	
International Trade Statistics report			<input checked="" type="checkbox"/>
Highlights			<input checked="" type="checkbox"/>
Metadata			<input checked="" type="checkbox"/>
Table of contents		<input checked="" type="checkbox"/>	
Appendix tables		<input checked="" type="checkbox"/>	
Charts		<input checked="" type="checkbox"/>	
World maps		<input checked="" type="checkbox"/>	<input checked="" type="checkbox"/>



Select one of the trade or tariff indicators from the drop-down list and click on a country or territory for further details.

Select an indicator...

- Trade to GDP ratio
- Tariff binding coverage
- MFN tariffs, simple average, final bound
- MFN tariffs, simple average, applied
- MFN tariffs, trade weighted average, applied
- Services sectors with GATS commitments
- Outstanding notifications in WTO Central Registry
- Merchandise exports
- Merchandise imports
- Commercial services exports
- Commercial services imports

http://www.wto.org/english/res_e/statis_e/statis_maps_e.htm

You can alternatively select a country or territory from this dropdown...

Select a country/territory...



Senegal

- Status of WTO membership: 1 January 1995
- Tariff binding coverage, %: 100
- MFN tariffs, simple average, final bound, %: 30
- MFN tariffs, simple average, applied, % (2009): 11.9
- MFN tariffs, trade weighted average, applied, % (2008): 8.9
- Merchandise exports f.o.b., million US\$ (2009): 2180
- Merchandise imports c.i.f., million US\$ (2009): 4713
- Commercial services exports, million US\$ (2008): 1470
- Commercial services imports, million US\$ (2008): 1722

See available [trade profiles](#) and [tariff profiles](#)

WTO STATISTICS GROUP : FLAGSHIPS

- **INTERNATIONAL TRADE STATISTICS:**

The “statistical yearbook” of WTO: data on recent and historical trends in merchandise and trade statistics; highlights on emerging patterns.

Data can be downloaded free in Excel and pdf formats and from the searchable database.

- **WORLD TARIFF PROFILE:**

At country level, provides a synthetic data on bound and applied tariffs in agriculture and NAMA, trade structure and tariffs faced in major markets (Joint publication ITC/UNCTAD/WTO).

The statistical tables are also available in Excel spreadsheet format.

➤ **Associated Tariff Data Bases:** [Tariff Analysis Online](#)
[Tariff Downloads Facility](#)

- **TRADE PROFILE:**

At country level, provides a snapshot of most salient economic and trade features, including some WTO related aspects.

New on WTO Statistics webpage:

World and Regional Export Profiles

World Commodity Profiles: World trade 2009 profiles of Agriculture, Fuels and Mining and Manufactures are now available in pdf format

Example of Summary Statistics on African Trade in Merchandises

MERCHANDISE TRADE

	Value, mn \$	Share		Annual Percentage Change		
	2009	2000	2009	2000-09	2008	2009
Merchandise exports f.o.b.	383 940	100	100	11	28	-31

Exports by destination a

By region

Europe	148 842	50	39	8	31	-34
Asia	85 273	17	22	15	37	-26
North America	65 681	17	17	11	20	-44
Africa	44 913	9	12	14	38	-18
Middle East	11 512	2	3	16	43	-27
South and Central America	9 254	2	2	11	53	-51
CIS	1 260	0	0	18	60	-29

By economic grouping

Developed Economies	218 571	69	57	9	27	-38
Developing Economies	146 904	29	38	15	39	-24
LDC (Least developed countries)	9 702	4	3	6	39	-53

Exports by destination, 2009



Exports by product b

By major product group

Agriculture products	39 101	12	10	9	18	-7
Fuels, mining products	245 748	59	64	12	32	-38
Manufactured goods	73 794	24	19	8	23	-25

Agreement on Agriculture

Agreement on Agriculture	31 057	9	8	10	23	-3
--------------------------	--------	---	---	----	----	----

Industrial goods

Industrial goods	352 883	91	92	11	29	-33
------------------	---------	----	----	----	----	-----

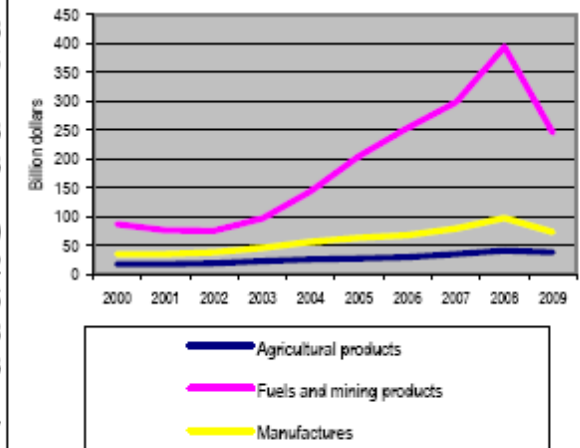
By product group

Fuels	212 387	52	55	12	34	-39
Other food products	27 284	7	7	10	23	-2
Non-ferrous metals	17 017	4	4	12	2	-26
Ores and minerals	16 344	3	4	16	49	-28
Other semi-manuf.	15 098	7	4	5	10	-23

Fastest growing product group

In 2009: EDP and office equipment	504	0	0	17	10	7
Since 2000: EDP and office equip.	504	0	0	17	10	7

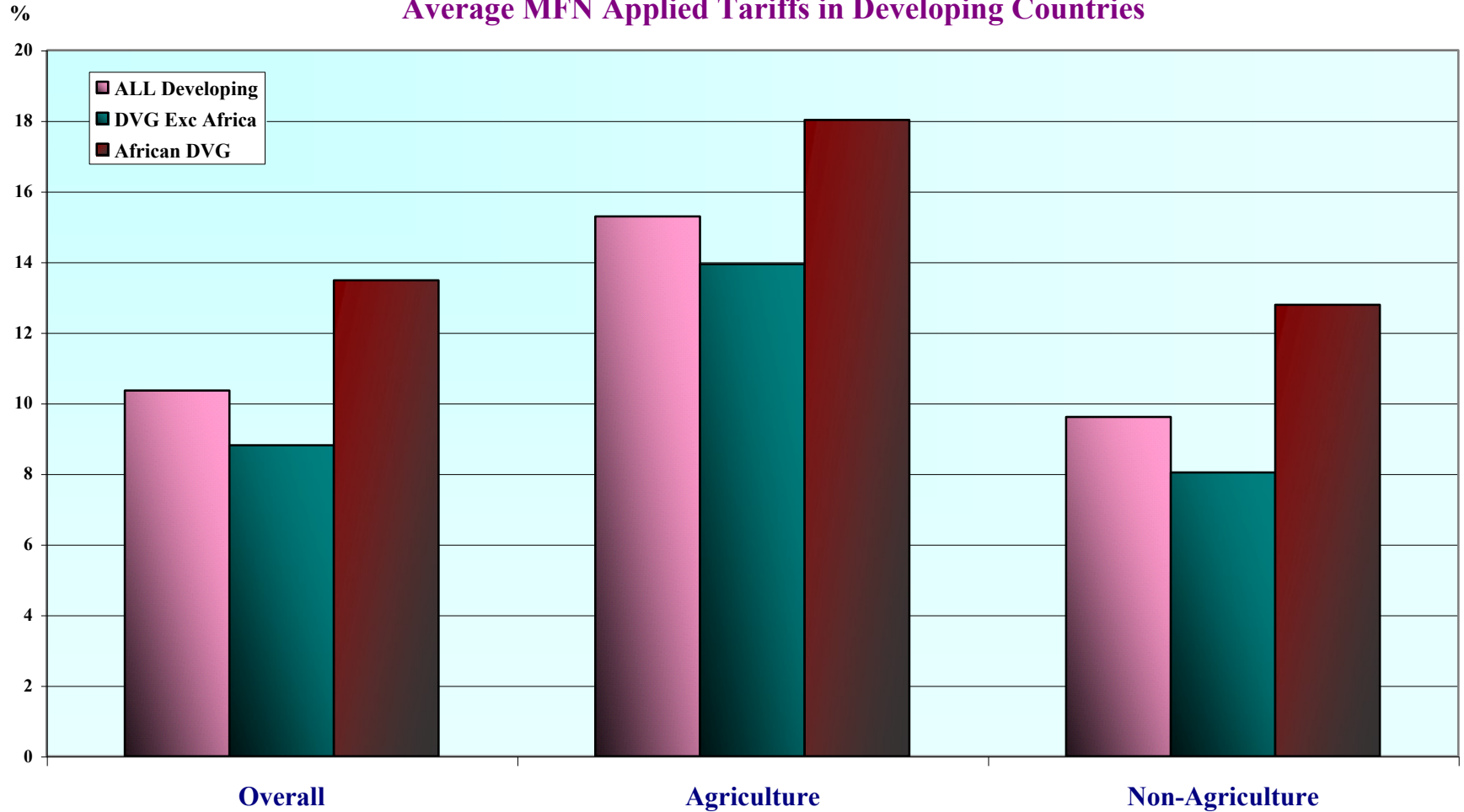
Exports by product, 2000-2009



Examples of Summary Statistics on African Tariffs on Merchandises

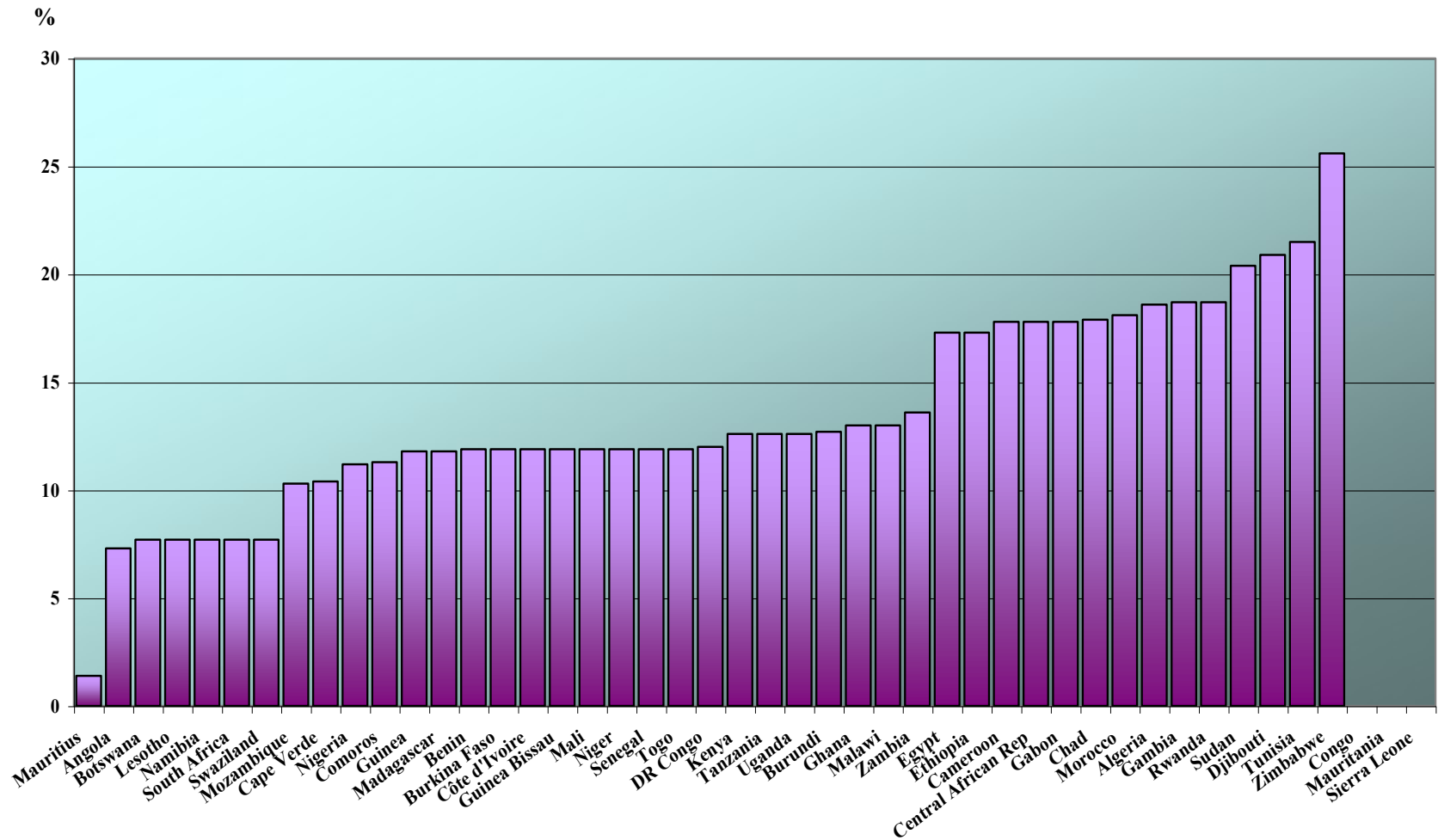
How do MFN applied tariffs in Africa compare to those of other developing countries?

Average MFN Applied Tariffs in Developing Countries



Examples of Summary Statistics on African Tariffs on Merchandises (cont.)

Latest Average MFN Applied Tariffs of African Countries



Applied tariff is for either 2008 or 2009.

Source: World Tariff Profiles, 2010.



DATA COMPONENT OPEN DISCUSSIONS