



AGRODEP

African Growth & Development Policy
modeling consortium

FACILITATED BY IFPRI 

A program in support of CAADP implementation

Number 53- October 20, 2017

NEWS

[Next AGRODEP Training Course Announced](#)

The AGRODEP team is pleased to announce a new two-part course on [Policy Analysis and Innovations in Value Chains](#). This course, which will be held on December 19-20, 2017 in Dakar, is part of the AGRODEP Value Chain Analysis Virtual Hub.

This two-day course will feature lectures and hands-on exercises using existing value chain data to help participants gain familiarity with various methods of value chain analysis, as well as with several new innovative interventions designed to increase farmers' well-being. The course is appropriate for researchers with a background in economics, agricultural economics, and quantitative analysis, as well as experience in value chain analysis and Microsoft Excel. [Applications](#) for this course will be accepted until October 27, 2017.

[New AGRODEP Technical Note Released](#)

The latest AGRODEP Technical Note has recently been released. [Sensitivity of Computable General Equilibrium Models to Macroeconomic Closure Rules: Evidence from the IFPRI Standard Model](#) is the 15th note in the [AGRODEP Technical Note Series](#). This note, written by David Laborde and Fousseini Traore of IFPRI, also features a [new toolbox on macroeconomic closure rules](#).

DEVELOPMENTS

[AGRODEP Participation in PARI National Policy Roundtable](#)

On October 12-13, several AGRODEP network members took part in the National Policy Roundtable of the [PARI project](#) in Ethiopia. The event presented preliminary research findings to key stakeholders involved in Ethiopia's national innovation processes.

Phoebe Scollard of IFPRI presented work on identifying agricultural typologies at the subnational level in Ethiopia, which are then used as inputs in economy-wide modeling to assess the effects of agricultural technology innovations.

AGRODEP member [Lulit Beyene](#) presented preliminary results of economy-wide modeling work conducted in collaboration with Fousseini Traore and Ismael Fofana of IFPRI.

PARI's main goal is to contribute to sustainable agricultural growth and food and nutrition security in Africa and India.

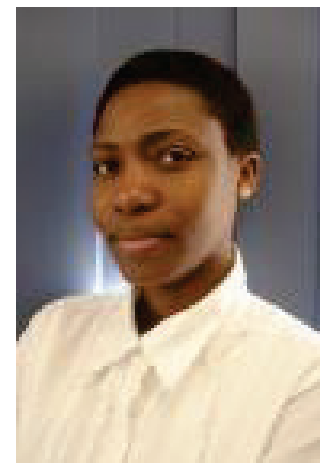
FEATURED MEMBERS



Dr. Gebrehaweria Gebrezgi is a citizen of Ethiopia. He has been an AGRODEP member since April 2013. At present, Gebrehaweria is a Research Economist at the International Water Management Institute (IWMI). He holds a B.A. in Economics from Asmara University, an M.A. in Economic Studies from Queensland University, Australia, and a Ph.D. in Economics and Resource Management from Norwegian University of Life Sciences. He specializes in agricultural production and technology. His research interests include the economics of smallholder irrigation, poverty analysis, food security, technology adoption, access to irrigation and its impact on livelihoods, and gender and resource management.



Dr. Lilian Kirimi is a citizen of Kenya. She has been an AGRODEP member since July 2015. At present, Lilian is a Senior Research Fellow at the Tegemeo Institute of Agricultural Policy and Development, Egerton University. She holds a B.Sc. and an M.Sc. in Agricultural Economics from Egerton University and a Ph.D. in Agricultural Economics from Michigan State. She specializes in agricultural finance. Her research interests include production, productivity and marketing of staple food crops, food security, agricultural policy, agricultural finance, gender analysis, climate change, off-farm employment, and value chain analysis.



Dr. Olufunke Alaba is a citizen of Nigeria. She has been an AGRODEP member since April 2012. At present, Olufunke is a Senior Lecturer at the School of Public Health and Family Medicine at the University of Cape Town. Before joining the University of Cape Town, she worked for the University of Pretoria. She holds a B.Sc. in Economics from the University of Ado-Ekiti, an M.Sc. in Economics from the University of Ibadan, and a Ph.D. in Economics from the University of Ibadan. She specializes in applied econometrics, health, education and welfare economics, and poverty measurement and analysis.

AGRODEP
Titre 3396 Lot #2
Dakar Almadies - BP 24063, Senegal
Website: www.agrodep.org; Email: info-agrodep@agrodep.org

MailChimp

[unsubscribe from this list](#)